

Graciela y Buenos Aires

José Bragato

Tango para cello y piano.

Tango lento (♩=68)

A tempo (♩=88)

Più mosso (♩=116)

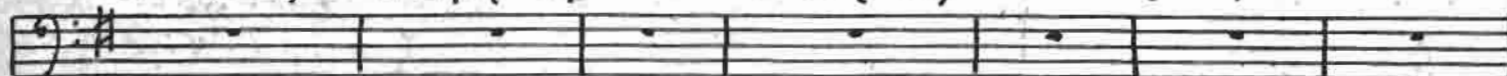


Ad lib (♩=68)

A tempo (♩=88)

Più mosso (♩=116)

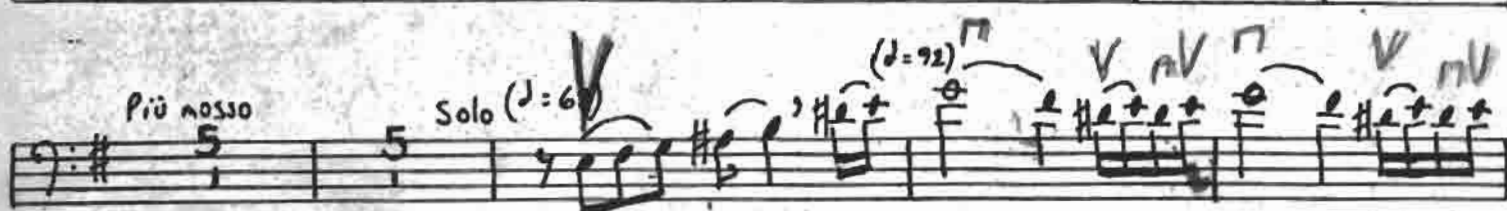
(♩=96)



Più mosso

Solo (♩=68)

(♩=92)



mp

(♩=116)

(♩=68)

(♩=92)



mp



(♩=68)



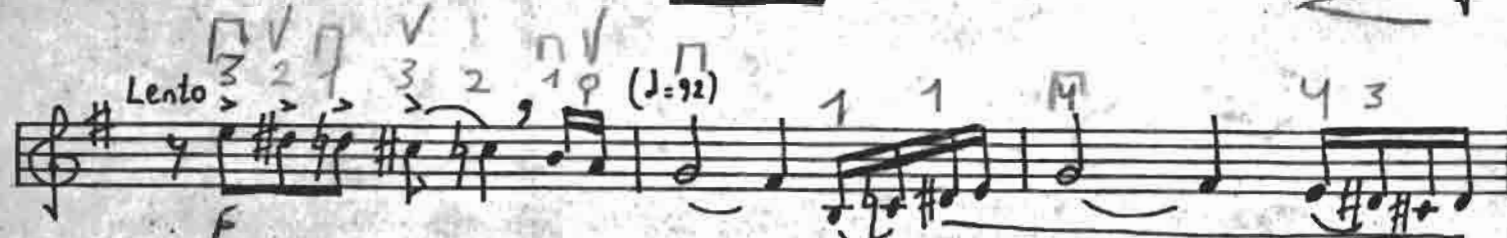
mf

(♩=116)



Lento

(♩=92)



f

Meno mosso



mf

Largo lento

mf espress.

Allegro (♩=126)